

Joint Public Health and Education Position on Additional Baseline Measures for Education

Notes for Early Years and Childcare Providers to support the letter from Helen Shearer 21.10.21 from Bolton Start Well, Bolton Council Public Health and Bolton Council Children's Services

Helen Shearer, Head of Start Well; Strategic Lead for Early Years

Paul Rankin, Deputy Director Children's Services

Lynn Donkin, Assistant Director/Consultant in Public Health
Suzanne Gilman, Assistant Director/Consultant in Public Health

Public Health update

[Home](#)

Coronavirus (COVID-19)

Coronavirus remains a serious health risk. You should stay cautious to help protect yourself and others.

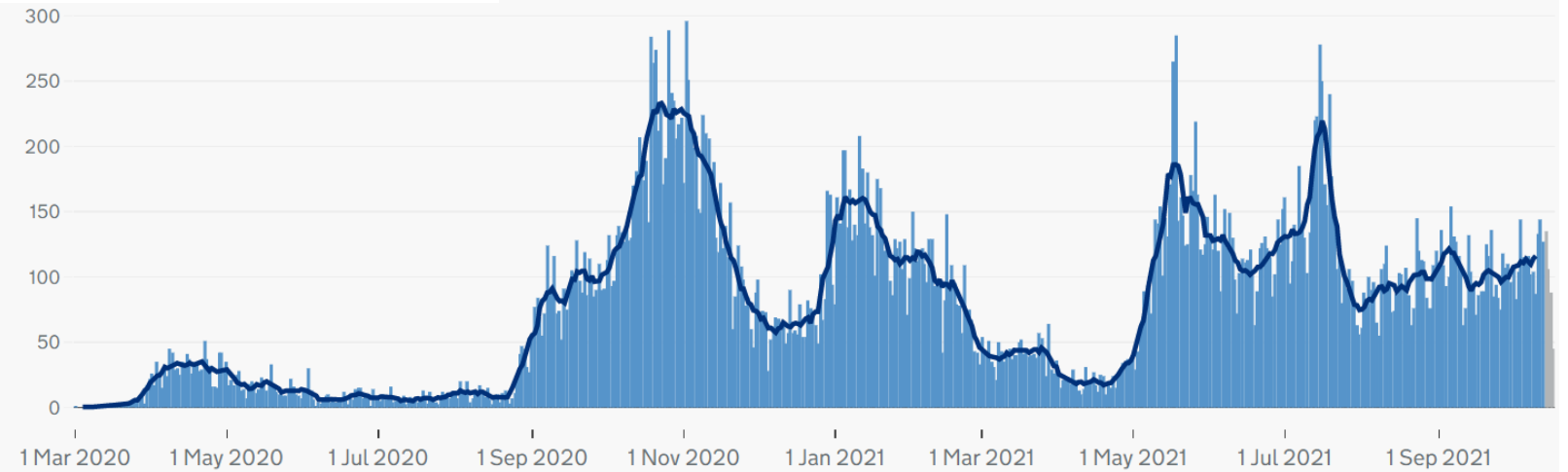
- Let fresh air in if you meet indoors. Meeting outdoors is safer
- Wear a face covering in crowded and enclosed spaces where you come into contact with people you do not normally meet
- [Get tested](#) and self-isolate if required
- If you haven't already, [get vaccinated](#)



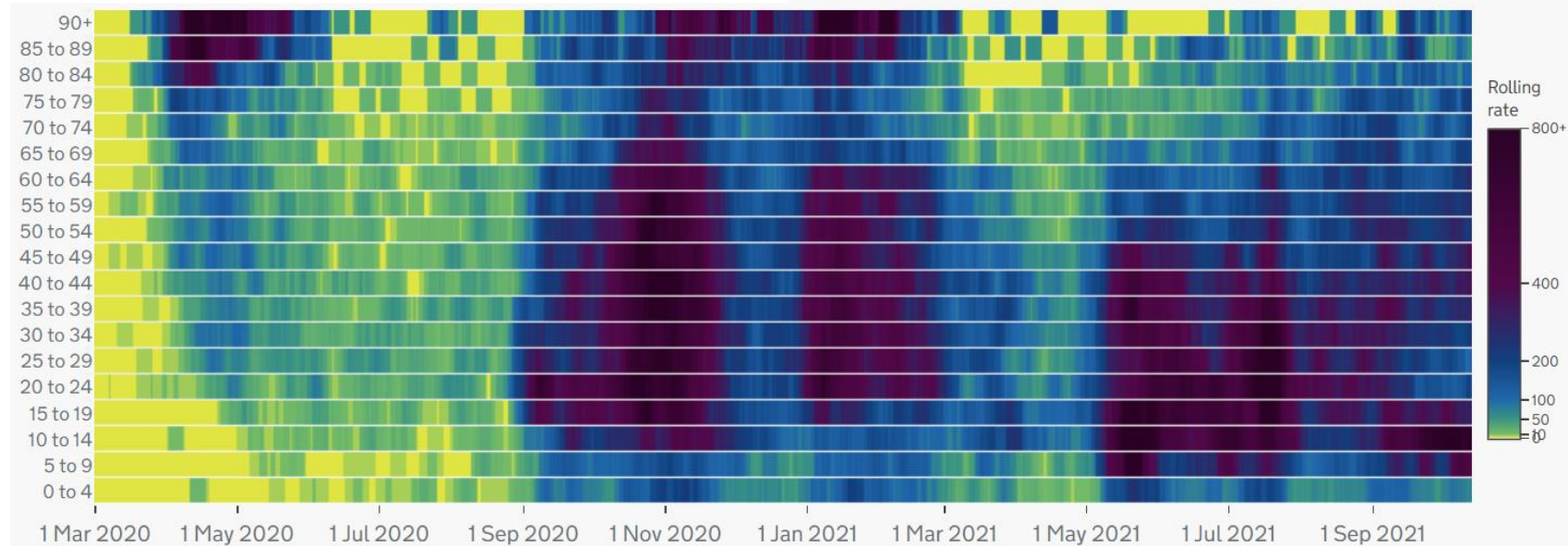
[Find out how to stay safe and help prevent the spread](#)

Case rate trends

Cases by specimen date



Age-specific case rates by specimen date



<https://coronavirus.data.gov.uk/details/cases?areaType=Itla&areaName=Bolton> accessed 6pm 18th Sept 2021

“Important to act early to slow a growing epidemic”,
SAGE, 9th Sept 2021

- **Stay cautious**
- Maintain awareness of **symptoms and isolation**
- Promote **twice-weekly, rapid lateral flow testing** for staff, secondary students and families
<http://www.bolton.gov.uk/testing>
- Promote **vaccination** <https://www.boltonccg.nhs.uk/patient-zone/coronavirus>

Additional baseline measures for settings in Bolton

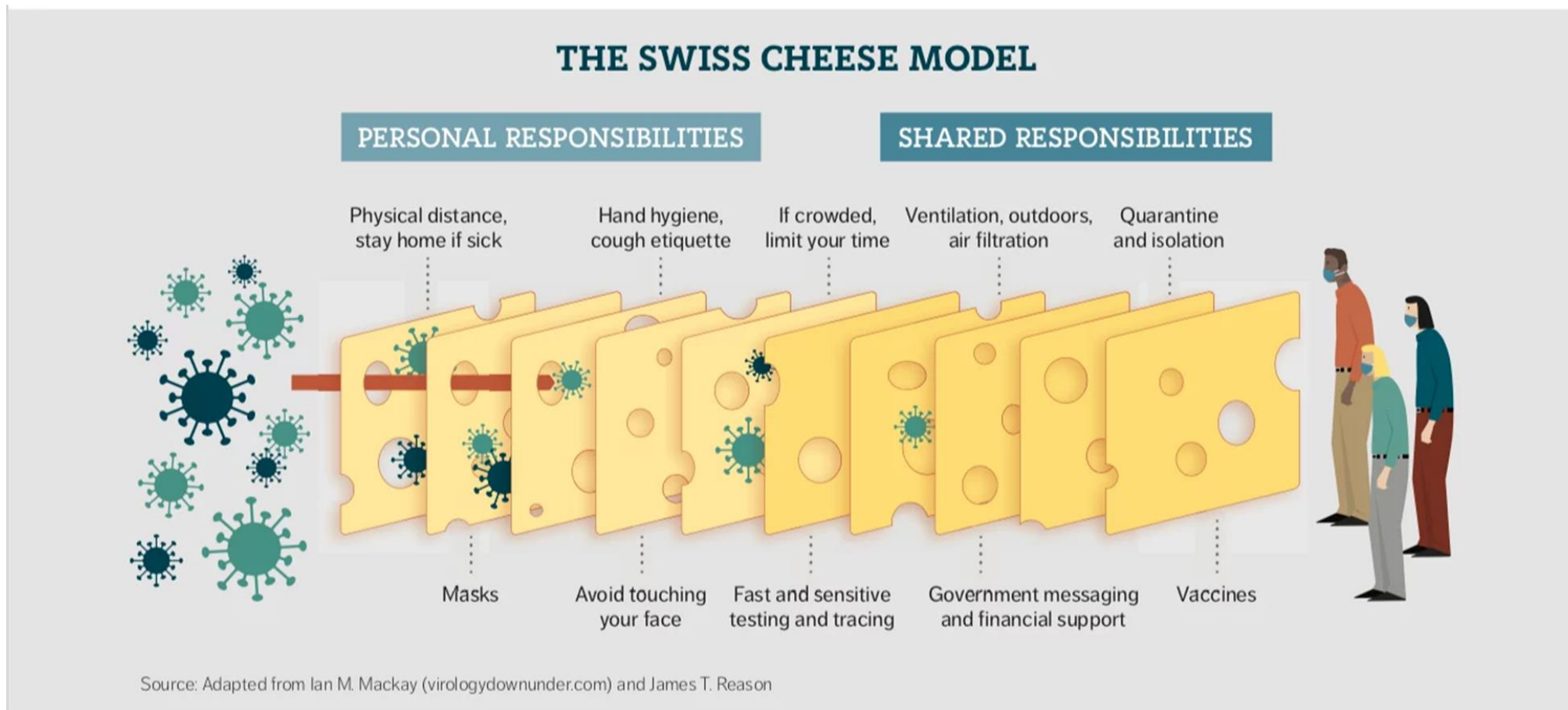
Aim: to prompt additional caution with minimal impact on the education and activities for providers, aiming to support what we would think of as a normal educational experience for children



Baseline measure – national Guidance

1. Ensure **good hygiene** for everyone.
2. Maintain appropriate **cleaning** regimes.
3. Keep occupied spaces **well ventilated**.
4. Follow public health advice on **testing, self-isolation and managing confirmed cases** of COVID-19.

No single measure is perfect ... adding layers of mitigation reduces risk



Additional baseline measures for schools and settings in Bolton

- Clear messaging and communications to encourage staff, visitors, students (year 7 and above), and their households to undertake twice-weekly lateral flow testing for people without symptoms
- Encourage the wearing of face coverings in communal areas for staff, visitors and students (year 7 and above)
- Household close contacts in KS2 and above who are exempt from isolation and are attending school are encouraged to carry out daily lateral flow testing for 10 days after the onset of symptoms (or positive test if asymptomatic) in the case in their household, and only attend school if their lateral flow test is negative. They are also encouraged to follow national guidance for all contacts and access a PCR test at [COVID-19: guidance for households with possible coronavirus infection - GOV.UK \(www.gov.uk\)](https://www.gov.uk/guidance/covid-19-guidance-for-households-with-possible-coronavirus-infection). People who have tested positive with a PCR test within the last 90 days do not need to be tested.
- Consider opportunities to reduce indoor gathering and mixing where possible
- Promote social distancing between staff within setting

On-site events

For events such as musical productions, or Open Evenings where visitors are attending site, refer guidance for events at <https://www.gov.uk/guidance/working-safely-during-covid-19/events-and-attractions> (scroll down to 'Additional guidance: event planning') alongside setting specific guidance.

Consider opportunities for caution – some suggestions:

- Encourage lateral flow testing
- Promote face coverings for visitors as well as staff and students (Y7+)
- Try to reduce crowding at 'pinch points' - one way system, staggering entry/exit, 'stewards' to help manage queues or 'pinch points', timed slots, additional performances
- Use of virtual or online content/options (e.g. Messages from manager recorded and put on website, virtual parents evenings)

We advise having a plan in place for the possibility that events may need to be cancelled or rearranged at short notice.

Settings reaching threshold for extra actions [Managing coronavirus \(COVID-19\) in education and childcare settings - GOV.UK](https://www.gov.uk/guidance/managing-coronavirus-covid-19-in-education-and-childcare-settings) (www.gov.uk) will likely have additional actions in place to contain spread, such as being advised to further limit intergroup mixing and gatherings, or limitations on events, and these will also need to be taken into account.

Events: off-site trips and activities

Some suggestions for additional caution here could include, for example:

- seating children in class/year groups to minimise intergroup mixing within the theatre and on transport to/from the venue
- windows open on the bus
- Staggering arrival times at venues to reduce crowding at 'pinch points'

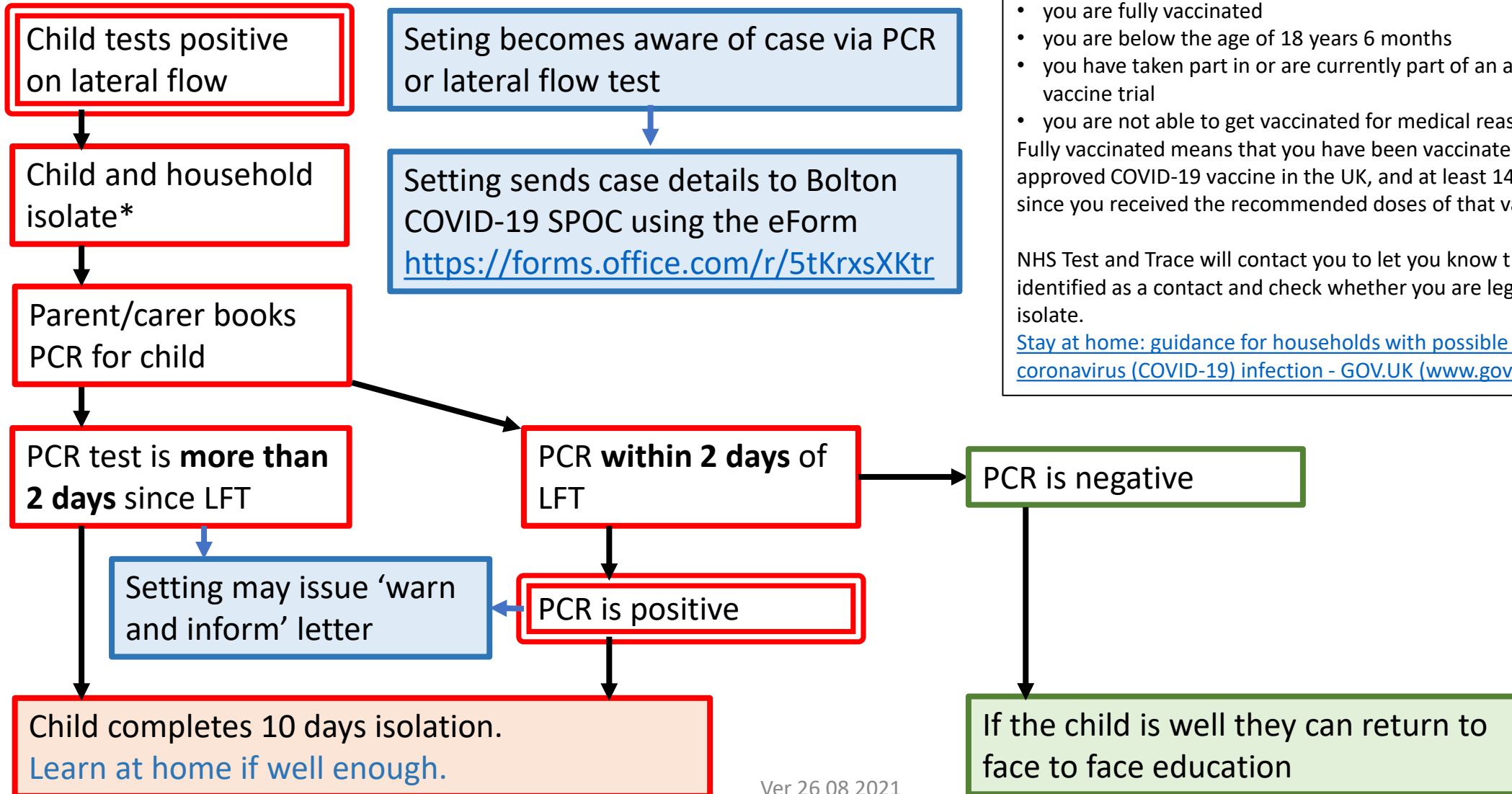
We advise having a plan in place for the possibility that events may need to be cancelled or rearranged at short notice.

Settings reaching threshold for extra actions [Managing coronavirus \(COVID-19\) in education and childcare settings - GOV.UK \(www.gov.uk\)](https://www.gov.uk/government/guidance/managing-coronavirus-covid-19-in-education-and-childcare-settings) will likely have additional actions in place to contain spread, such as being advised to further limit intergroup mixing and gatherings, or limitations on events, and these will also need to be taken into account.

Managing COVID19 cases in educational settings – ****updated****



Positive case in a child



* From 16 August, you will not be required to self-isolate if you live in the same household as someone with COVID-19 and any of the following apply:

- you are fully vaccinated
- you are below the age of 18 years 6 months
- you have taken part in or are currently part of an approved COVID-19 vaccine trial
- you are not able to get vaccinated for medical reasons

Fully vaccinated means that you have been vaccinated with an MHRA approved COVID-19 vaccine in the UK, and at least 14 days have passed since you received the recommended doses of that vaccine.

NHS Test and Trace will contact you to let you know that you have been identified as a contact and check whether you are legally required to self-isolate.

[Stay at home: guidance for households with possible or confirmed coronavirus \(COVID-19\) infection - GOV.UK \(www.gov.uk\)](https://www.gov.uk/guidance/stay-at-home-guidance-for-households-with-possible-or-confirmed-coronavirus-covid-19-infection)

Positive case in a staff member

Setting becomes aware of case via PCR or lateral flow test



Setting sends case details to Bolton COVID-19 SPOC using the eForm
<https://forms.office.com/r/5tKrxsXKtr>



Setting may issue 'warn and inform' letter

*Amended : settings
no longer need to
report to the
national Self-
Isolation Service
Hub*

When settings should consider further action

Thresholds apply to whole setting

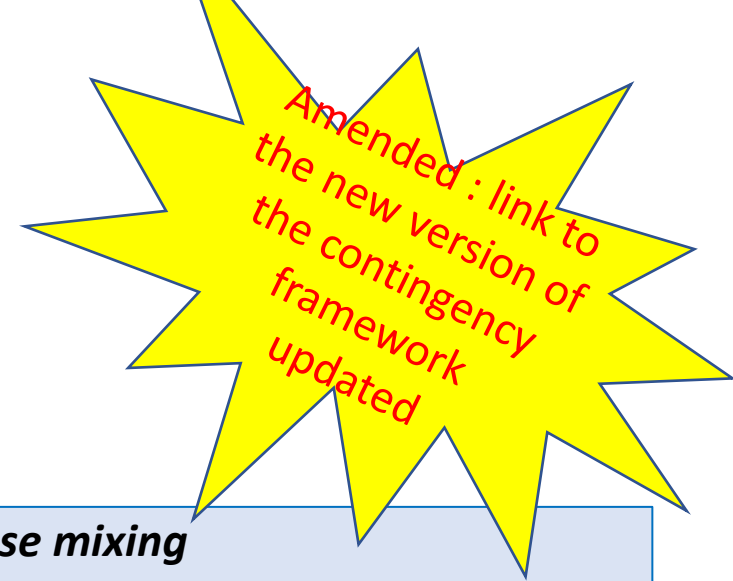
For most education and childcare settings, whichever of these thresholds is reached first:

- 5 children, pupils, students or staff, who are likely to have mixed closely, test positive for COVID-19 within a 10-day period; or
- 10% of children, pupils, students or staff who are likely to have mixed closely test positive for COVID-19 within a 10-day period

For special schools, residential settings, and settings that operate with 20 or fewer children, pupils, students and staff at any one time:

- 2 children, pupils, students and staff, who are likely to have mixed closely, test positive for COVID-19 within a 10-day period

Extract taken on 18 20 2021 from [Contingency framework: education and childcare settings - GOV.UK \(www.gov.uk\)](https://www.gov.uk/government/publications/contingency-framework-for-education-and-childcare-settings)



Close mixing

For schools this could include:

- *a class group or subject class*
- *a friendship group mixing at breaktimes*
- *a sports team*
- *a group in an after-school activity*

➤ **Contact Bolton COVID-19 SPOC on 01204 336004**

Monday – Friday 8.30-5.30; Sat, Sun 9.00-1.30

12-15's Vaccination programme



Roll out of the school- based vaccination programme for 12 to 15 year-olds

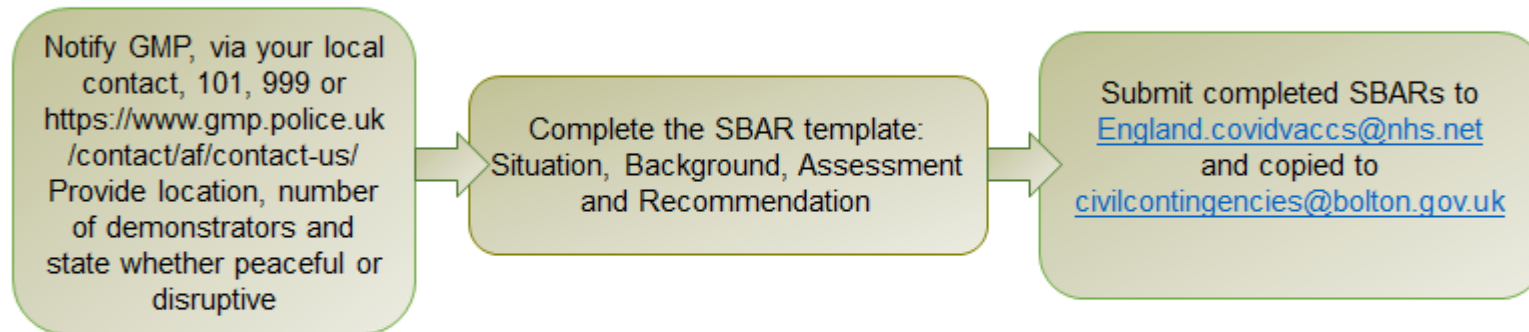
- From week commencing 20th September 2021 healthy children aged 12-15 years are eligible for their first COVID 19 vaccination and offered a first dose of the Pfizer/BioNTech vaccine.
- This is a schools based vaccination programme, delivered by the school aged immunisation service (SAIS) provided by Bolton NHS Foundation Trust and subcontracted providers, and a new 'out of school offer' going live from 23rd October.
- Funding for the programme flows from NHSE to Bolton NHS Foundation Trust who are contractually and legally responsible for the delivery of the programme, as they are for other school vaccination programmes.
- The COVID-19 vaccination programme is voluntary. Prior to the vaccination, children and young people, and their parents or guardians, will be offered advice and information on the vaccine including information around consent.
- The Bolton programme is working to roll out vaccinations to 15,481 children across Bolton secondary schools including independents and special schools (numbers estimated from the school roll).

Reporting of anti-vacc activity

- Low key approach to deter anti-vaccination targeting of schools has worked well. All anti-vacc. messaging has been to heads via e-mails and social media . Advice is to not respond and follow guidance provided on reporting the incident.
- 12 incidents reported to local GM Health and Social Care Partnership and highlighted to national NHS.
- Police neighbourhood approach – regular phone contacts throughout vaccination delivery to ensure safety of staff and pupils

Process for Anti-Vacc Reporting

Protest Reporting Requirements for Schools



Progress to date

Programme went live as of Tuesday 5th October with 30 educational settings offering on-site vaccinations so far.

SAIS using learning and feedback from sites to improve processes and delivery going forward

The NHS has delivered over 83 million vaccinations. 5000+ children and young people have been vaccinated within Bolton schools of the 15,481 eligible cohort

News

18th October

Thousands of children vaccinated against Covid in Bolton



By Lyell Tweed | [@lyell_tweed](#)
News Reporter




Vaccinations for school children



MORE than 5,000 children in Bolton have been vaccinated, say Bolton Health bosses after Government figures said the uptake among 12-to-15-year-olds in the borough was low.

Contact Centre
Leader's
AI Guide

NICE inContact



Best practices
for implementing
conversational AI

Contact Centre Webinar

Watch now

How AI can Improve the Customer Experience

Watch the replay to see how AI can help you improve the customer experience, improve agent engagement, and much more.

Sponsored by NICE inContact 

Please email questions to policyandperformance@bolton.gov.uk

Vaccinations available more widely

- From **Saturday 23rd October**, children and young people aged 12-15 will be able to receive the first dose of the COVID-19 vaccine at sites available via the national booking system, in addition to the vaccination programme being delivered in schools.
- From next week parents and carers will get information with links to book appointments at local vaccination sites.

[C1440-COVID-19-vaccination-deployment-next-steps-for-12--15-year-old-vaccination.pdf \(england.nhs.uk\)](https://www.england.nhs.uk/media/11440/covid-19-vaccination-deployment-next-steps-for-12-15-year-old-vaccination.pdf)

- Schools that have a vaccination session booked currently will go ahead as planned.
- Children that did not receive a vaccine at a school session earlier this month, that would like one, are now able to book an appointment in the community to receive the vaccine there.
- Further information on the out of school offer will be communicated to schools and families

Further information and resources

Guidance and resources for schools

[COVID-19 vaccination: resources for schools - GOV.UK \(www.gov.uk\)](https://www.gov.uk/covid-19/vaccination-programme/schools)

Guidance for parents

[COVID-19 vaccination programme for young people: guidance for parents - GOV.UK \(www.gov.uk\)](https://www.gov.uk/covid-19/vaccination-programme/young-people/guidance-for-parents)

Resources for children and young people

[COVID-19 vaccination: resources for children and young people - GOV.UK \(www.gov.uk\)](https://www.gov.uk/covid-19/vaccination-programme/young-people/resources-for-children-and-young-people)

Questions



Q&A

Q. Why we are introducing covid control measures when we are below other authorities?

Case rates in Bolton are high and are currently rising. Although rates are not currently as high as elsewhere, they are still at levels that cause concern and impact on settings through pupil and staff absences.

Following discussions with heads as a result of increased pressures on some schools from an infection perspective but also from a staffing availability perspective as well. Several schools have high numbers of staff absent and are struggling to cover lessons due to lack of supply availability. View of heads and officers in the council was that it was prudent to recommend additional measures to help mitigate against this.

Q. Are these additional baseline measure mandatory?

No. The additional baseline measures are recommendations. Other LAs also taking this precautionary action.

Q&A

Q. Can I go ahead with trips, parties, open events?

Yes. This guidance is intended to support what we would consider to be normal educational experience wherever possible, but we recommend being cautious and considering opportunities for extra caution that would have minimal impact on the educational experience. This could include limiting intergroup mixing, wear face coverings and lateral flow testing. No single measure alone is perfect, therefore consider 'layering' simple mitigations.

For events such as setting productions, or Open Evenings where visitors are attending site, refer guidance for events at <https://www.gov.uk/guidance/working-safely-during-covid-19/events-and-attractions> (scroll down to 'Additional guidance: event planning') alongside setting specific guidance.

We advise having a plan in place for the possibility that events may need to be cancelled or rearranged at short notice.

Settings reaching threshold for extra actions [Managing coronavirus \(COVID-19\) in education and childcare settings - GOV.UK](https://www.gov.uk/guidance/managing-coronavirus-covid-19-in-education-and-childcare-settings) (www.gov.uk) will likely have additional actions in place to contain spread, such as being advised to further limit intergroup mixing and gatherings, or limitations on events, and these will also need to be taken into account.

Q. Some of my staff have concerns about vaccination. What can I do?

Continue to promote vaccination. First and second doses remain available, and booster programme is underway.

The staff operating walk-in vaccination clinics and the vaccination bus would be happy to chat with anyone who is interested in knowing more about the vaccine to help them reach an informed decision.

Staff who have specific concerns relating to their personal health status can discuss these with their GP practice.

Vaccination is advised for pregnant women. There's no evidence the COVID-19 vaccines have any effect on your chances of becoming pregnant. There's no need to avoid getting pregnant after being vaccinated.

[Pregnancy, breastfeeding, fertility and coronavirus \(COVID-19\) vaccination - NHS \(www.nhs.uk\)](https://www.nhs.uk/conditions/coronavirus/covid-19/vaccination/pregnancy-breastfeeding-fertility-and-coronavirus-covid-19-vaccination-nhs)

Q&A

Q. Have parents been informed about the additional measures?

Communications via Council social media channels and press release. Looking into further communications for parents that may be helpful.

Q. Can non-vaccinated staff, who are identified as a close contact, come in if they take a daily Lateral Flow Test?

No, non-exempt staff would be legally obliged to self isolate

Q. Symptomatic children – Setting insist on negative PCR to return to setting, what to do when parents unhappy taking children for PCR tests if Lateral flow tests are negative?

If children are symptomatic and unwell Gov guidance recommends that PCR test is taken. Will consider how parent facing communication can be developed to support this message.