

Weekly note on COVID in Bolton – 19th November 2020

Local COVID Alert Level: National restrictions apply from 5th November

This note brings together a summary of the information from a range of indicators of cases of COVID-19 amongst residents of Bolton. The information is based on data from official sources. It presents the picture of our understanding according to the latest available data on the date of the note's release. No single indicator gives the complete picture; counts and rates will vary from day to day and are interpreted alongside other indicators and contextual information including testing rates, positivity, our understanding of what's driving transmission locally and within neighbouring areas. The period to which the indicators apply may vary and are stated within the text.

Data on COVID-19 in Bolton is available at <https://www.boltonjsna.org.uk/coronavirus>

Positive cases from swab testing (Pillar 1 and Pillar 2)

- The number of positive cases amongst Bolton residents remains high, with on average 182 cases per day in the week to 13th November. Most positive cases are via Pillar 2 (community swab testing), with a small number of cases diagnosed via Pillar 1 (NHS and PHE testing for those with a clinical need, and health and care workers)
- New COVID-19 cases remain widespread across the borough
- We are seeing cases across all age groups, including older age groups
- In the last fortnight the largest proportion of cases were found in people aged 35-44
- The largest number of cases are White British (58%). There is a disproportionate number of cases of Asian background (18%)
- There remains a disproportionate number of cases from the most disadvantaged parts of the borough

7-day rate of cases per 100,000 population

The current rate is estimated to be 443.1 for the 7 days ending 13th November. This rate is an estimate and may change.

Test numbers and Positivity

Testing rates are showing a downward trend, however proportion of tests reported as positive, known as 'positivity', remains high at 17.4% for the 7 days ending 13th November.

Community clusters and outbreaks

Situations investigated in the last week include a small number of care homes.

Regional R

The R value for the North West is 0.9-1.1 as of Friday 13th November. When there is a significant amount of variability across a region, for example due to a local outbreak, then a single average value does not accurately reflect the way infections are changing throughout the region.

NHS activity

The current levels of infection in the community are translating into hospital admissions. Data available to us internally indicate admissions to hospital for COVID-19 are rising as are the number of patients requiring critical care for serious illness. The recent increase in the number of deaths at Royal Bolton Hospital, reflects this rise.

Deaths with COVID-19 and deaths from all causes

Sadly, there have been a total of 399 deaths with COVID-19 amongst Bolton residents (registered up to 14th November 2020). The number of deaths has increased in recent weeks.

Ward level data

In the last week cases have been reported on all wards in the borough. From 2nd November – 8th November, Crompton ward and Rumworth ward saw the highest number of cases; Harper Green and Horwich North East both saw significant increases from the previous week.

Definitions:

Pillar 1: swab testing in Public Health England (PHE) labs and NHS hospitals for those with a clinical need, and health and care worker

Pillar 2: swab testing for the wider population, as set out in government guidance and delivered with Deloitte

Figure 1.

Daily confirmed cases of COVID-19 for Bolton, with Pillar 1 and Pillar 2 cases inclusive

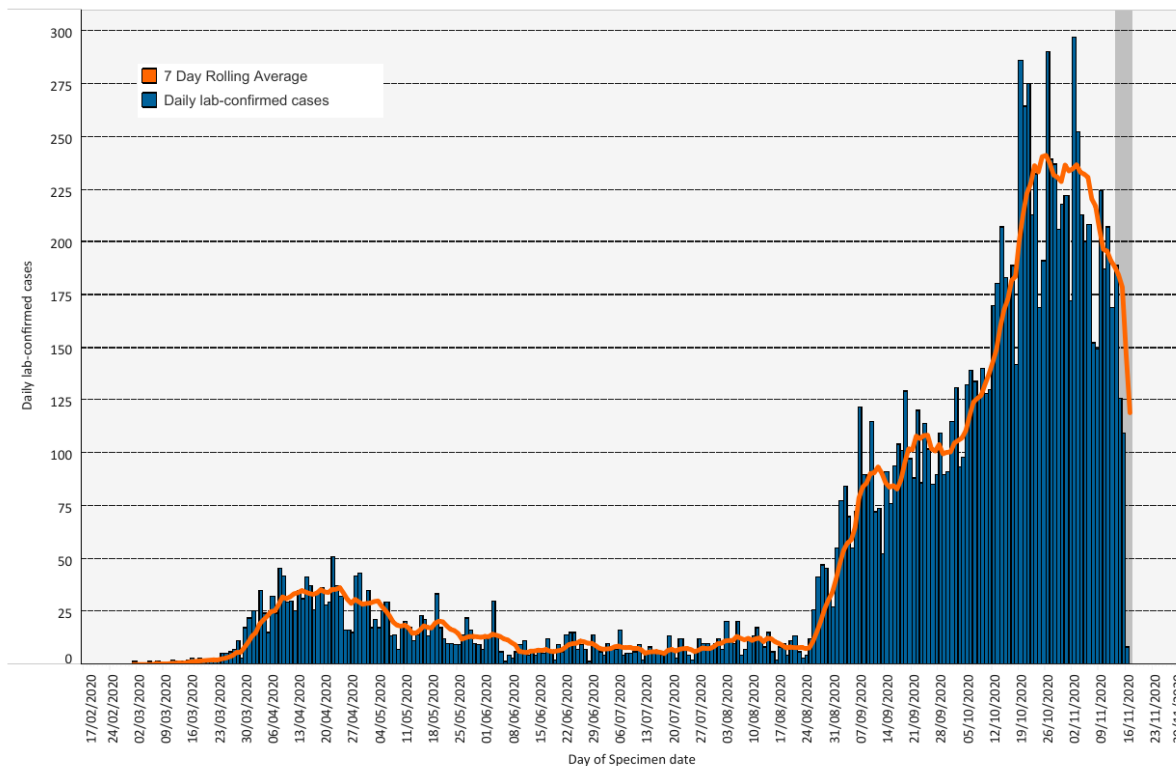
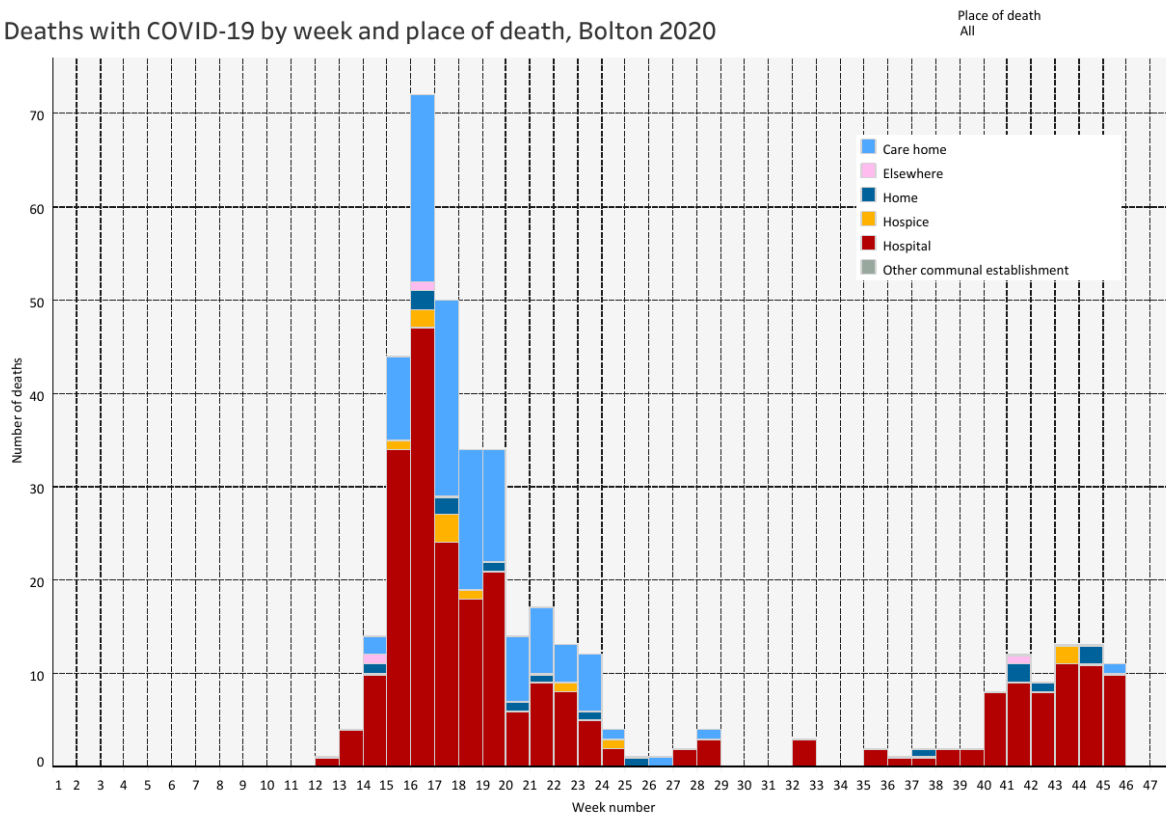


Figure 2.

Deaths with COVID-19 by week and place of death, Bolton 2020



Prepared by Lynn Donkin, Assistant Director/Consultant in Public Health with support from Bolton COVID-19 Data Cell. Queries should be sent to: PublicHealthDirectorate@bolton.gov.uk

Definitions:

Pillar 1: swab testing in Public Health England (PHE) labs and NHS hospitals for those with a clinical need, and health and care worker
Pillar 2: swab testing for the wider population, as set out in government guidance and delivered with Deloittes