



**Bolton
Family Hubs**

What's on for families?

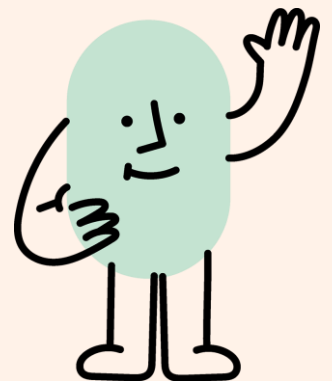
Our 'Guide to services and activities' is your go-to resource! It provides:

- A timetable of activities for each Family Hub and other areas.
- Handy links to services and support for every age and stage of your child's development.
- Information for families with 0–19 year olds (and up to 25 with SEND).



Where to get a copy?

- Pick up a printed copy from your local Family Hub or library
- Visit www.boltonfamilyhubs.org.uk
- Scan the QR code on your mobile camera to access a digital version





**Bolton
Family Hubs**

What's on for families?

Our 'Guide to services and activities' is your go-to resource! It provides:

- A timetable of activities for each Family Hub and other areas.
- Handy links to services and support for every age and stage of your child's development.
- Information for families with 0–19 year olds (and up to 25 with SEND).



Where to get a copy?

- Pick up a printed copy from your local Family Hub or library
- Visit www.boltonfamilyhubs.org.uk
- Scan the QR code on your mobile camera to access a digital version

